



Medium Duty Roller Conveyor, Traction Drive



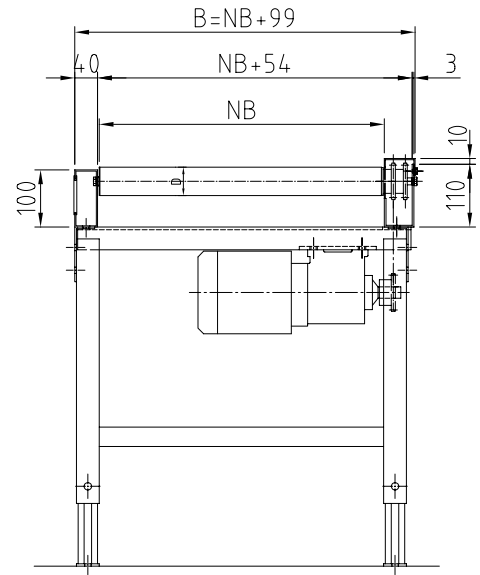
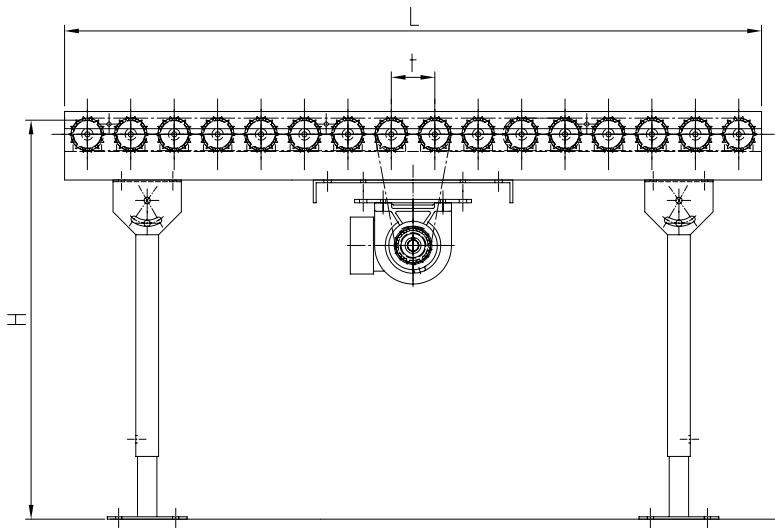
The GURA Medium Duty Roller Conveyor is designed to convey boxes, steel and plastic containers, as well as barrels. This roller conveyor is mainly used in in-house transport with picking, sorting and distribution systems. It is also used for the transport of workpiece carriers and to connect machine and assembly stations. This conveyor is designed for a safe transport of goods up to a max. load of 60 daN/m in a simple and economical way. The zinc-plated steel rollers are firmly put into the frame and equipped with a single plastic sprocket $Z = 11 \frac{1}{2} \text{ " } \times 5/16\text{ "}$. The maintenance-free rollers come with a serial permanent lubrication. The speed (v) is from 0.1 to 0.5 m/s. With a roller pitch of 100 mm the reference value for the carrying capacity is approximately 30 daN/m for boxes and approximately 60 daN/m for steel and plastic containers.

The accumulation pressure with a single friction drive is approximately 7 % of the good to be conveyed, and with double friction drive it is approximately 14 %. To separate the goods again we provide electropneumatical stops and acceleration lines. For troublefree operation you only need an oil and grease-free environment. As an option we offer enamelled steel profiles.

To upgrade your system a large-scale of ancillary equipment is provided, as well as controls.

GURA Medium Duty Roller Conveyor

- Bed widths: 300, 400, 450, 500, 600, 700 mm
- Roller pitches: 76.2, 101.6, 127, 152.4 mm
- Steel rollers: 50 mm, zinc-plated
- Drive: 3*230/400 volts, gear motor with intermediate gear, v max. = approx. 0.1 - 0.5 m/s
- Lengths: approx. 5 m at a carrying capacity of 60 daN /m per drive unit
- Customized widths and lengths on request
- Frame: zinc-plated steel, enamelled version (SL) on request
- Zinc-plated H-type supports and mountings
- Our complete system program includes straight lines, curves, merges and further components
- Ancillary equipment: guide rail, height and width adjustable, H-type supports, end stops



Accumulation Roller Conveyor, Friction Drive

Series	NB [mm]	t [mm]	L [mm]	Rollers D [mm]	v [m/s]	Capacity* [daN]
52100	300, 400	76.2, 101.6	length of segment	50x1.5 SV	0.1 - 0.5	1 - 200
52110	450, 500 600, 700	127, 152.4	max. 3,000mm as a multiple of t	60x2.0 SV		

Profile L130x40x3, SV; C40x100x40 SV with plastic cover profile

Accumulation Roller Conveyor, Double Friction Drive

Series	NB [mm]	t [mm]	L [mm]	Rollers D [mm]	v [m/s]	Capacity* [daN]
52200	300, 400	76.2, 101.6	length of segment	50x1.5 SV	0.1 - 0.5	1 - 200
52210	450, 500 600, 700	127, 152.4	max. 3,000 mm as a multiple of t	60x2.0 SV		

Profile L130x40x3, SV; C40x100x40 SV with plastic cover profile

Accumulation Roller Conveyor, Fixed Drive

Series	NB [mm]	t [mm]	L [mm]	Rollers D [mm]	v [m/s]	Capacity* [daN]
52300	300, 400	76.2, 101.6	length of segment	50x1.5 SV	0.1 - 0.5	1 - 200
52310	450, 500 600, 700	127, 152.4	max. 3,000 mm as a multiple of t	60x2.0 SV		

Profile L130x40x3, SV; C40x100x40 SV with plastic cover profile

Example order: 52100 - 100 - 400 - 3000 = Accumulation Roller Conveyor, Friction Drive

- 52100 = Series No.
- 100 = Roller pitch t [mm]
- 400 = Nominal width NB [mm]
- 3000 = Length L [mm]

Ancillary equipment:

Series	NB [mm]	Description
F5042	300 - 700	support, range of adjustment H= +- 50 mm
F3002	300 - 700	support with swivel joint, range of adjustment H= +- 50 mm
59930		guide rail, at both sides, SV-tube
56950	300 - 700	pneumatic sword-shaped stop (with friction drive only)
59910		light barrier and reflector holder