

## Roller Conveyor with Bottom Belt Drive

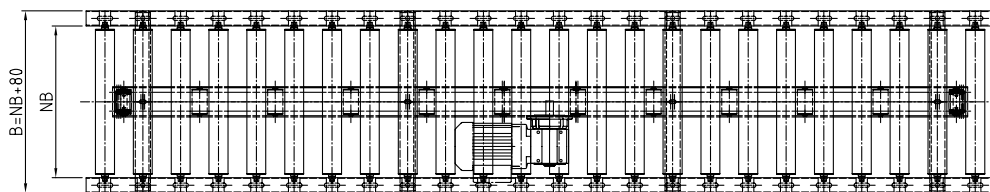
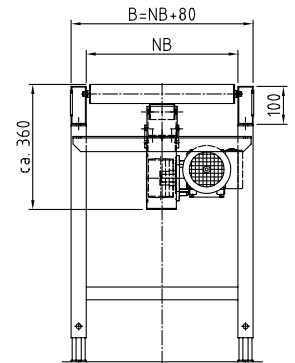
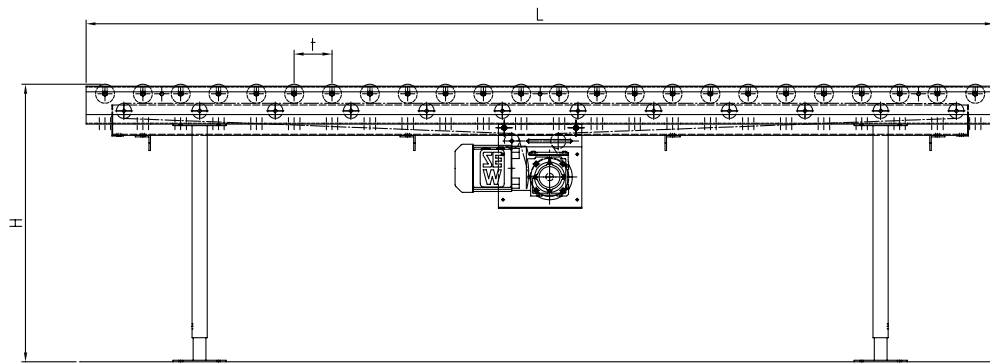


The GURA Roller Conveyor with bottom belt drive is designed to convey boxes, steel and plastic containers. This roller conveyor is also used for the transport of workpiece carriers and to connect machine and assembly stations. This conveyor is designed for a safe transport of goods up to a max. load of 60 daN/m in a simple and economical way. The low-noise, zinc-plated steel rollers are run on bearings with antitwist protection; the axles have antistatic ends made of plastic. The rollers are driven by a low-wear belt by means of pressure from the bottom. The belt can be mounted in the middle as well as at one side of the roller. Normally accumulation can only be realized by operation at set intervals or rather stopping the drive. The drive length is max. 30 m per drive with a belt width of 50 mm and 15 m with a belt width of 25 mm. The speed (v) is from 0.1 to 0.8 m/s. With a spring loaded axle and a roller pitch of 100 mm the reference value for the carrying capacity is approximately 30 daN/m for boxes and approximately

50 daN/m for steel and plastic containers. The bottom belt drive enables a defined conveying which includes a better slaving and alignment of the goods (centring station, canted roller conveyor, strapping, etc.). For troublefree operation you only need an oil and grease-free environment. As an option we offer enamelled steel profiles. The steel profiles are sealed with a black plastic cover (PP) over the whole length. It can be used as a cable channel or a compressed-air piping channel. On request gaps between the rollers in the workplace sectors can be covered. To upgrade your system a large-scale of ancillary equipment is provided, as well as controls.

### GURA Roller Conveyor with Bottom Belt

- Bed widths: 300, 400, 450, 500, 600, 700 mm
- Roller pitches: 55, 75, 100, 150 mm
- Steel conveyor rollers: 50 mm, zinc-plated
- Drive: 3x230/400V, gear motor, v max. = ca. 0.1 - 0.8 m/s.
- Length: up to approx. 30 m/s with a strain of 60 daN/m per drive unit
- Customized lengths and widths on request
- Frame: zinc-plated steel (SV); enamelled version (SL) on request
- Zinc-plated H-type supports and mountings
- Our complete system program includes straight lines, curves, merges and further components.
- Ancillary equipment: guide rails, height and width adjustable, H-type supports; end stops.



**Roller Conveyors with Bottom Belt Drive**

Series	NB [mm]	L [mm]	t [mm]	Profile [mm]	Rollers D [mm]	v [m/s]	Capacity* [kg/m]
55010	300, 400	length of segment	55, 75	C40x100x40, SV	Ø 50x1.5, SV	0.1 - .0.8	1 - 60
	450, 500	max. 3,000 mm	100, 150	C40x100x40, SL			
	600, 700	as a multiple of t		with plastic cover profile			

SV = zinc-plated steel  
 SL = enamelled steel

\* Benchmarks. Mandatory values on request.

**Example Order: 55010 – 100 – 400 – 3000**

- 55010 = Series no.
- 100 = Nominal width (NB) [mm]
- 300 = Roller pitch (t) [mm]
- 3000 = Conveyor length (L) (has to be a multiple of t) [mm]

**Ancillary Equipment:**

Series	NB [mm]	Description
F5042	300 - 700	support, adjustment range H= +- -50 mm
F3002	300 - 700	support with swivel joint, adjustment range H= +- -50 mm
59930	300 - 700	guide rail, at both sides, SV-tube
59910		light barrier and reflector holder