



Accumulation and Conveying without Pressure



This conveyor system has been designed to safely buffer delicate goods with different dimensions or weights with zero pressure on a roller conveyor and to convey them outwards separately. Here gentle accumulation, conveying and separating is guaranteed. This is realized by means of a drive via a 50 mm bottom belt. The belt is pressed under the rollers via compressed air. During accumulation operation the bottom belt comes off and the corresponding roller section is slowed down. The sections and therefore the accumulation capacity depend on the longest good to be conveyed. The control of the conveying and brake cycles is realized touch-free via optoelectronic sensors with integrated pneumatic device. Thanks

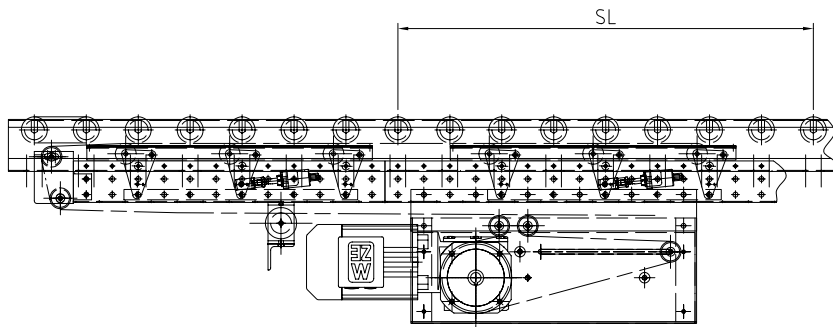
to this control long conveying tracks (up to approx. 40 m) can be operated with only one drive motor. All cables and tubes are stowed inside the 100 x 40 mm system profile and are easily accessible.

For troublefree operation you only need an oil and grease-free environment. As an option we offer enamelled steel profiles.

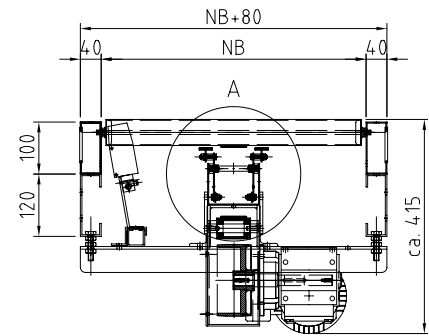
The steel profiles are sealed with a black plastic cover (PP) over the whole length. It can be used as a cable channel or a compressed-air piping channel.

GURA Accumulation Conveyor

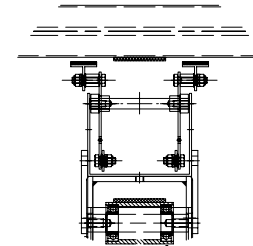
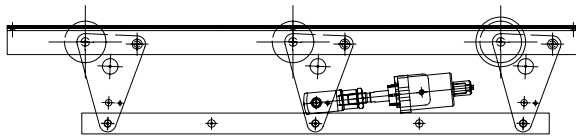
- Nominal widths: 300 - 1000 mm
- Conveying tracks: up to approx. 40 m with only one drive unit
- Non-positive break at each roller to guarantee a safe stop of the goods.
- Frame: zinc-plated steel (SV); enamelled version (SL) on request
- Drive: three phase gear motor, 3x230/400volts, 50hz
- Speed (v) = 0.1 - 0.8 m/s
- Roller pitches: 62, 75, 100, 125, 150 mm
- Combination with all components of series 50000 possible without problems.
- Profile: Sendzimir zinc-plated or enamelled
- Customized lengths and widths on request
- Touch-free recognition of the goods



Detail 1:5



A (1:5)



Accumulation Conveyor

Series	NB [mm]	La [mm]	t [mm]	Profile [mm]	Rollers D [mm]	H [mm]	Capacity* [daN/m]
55510	300 -1000 mm	drive length max. 40 m as a multiple of the roller pitch t	62.5, 75, 100 125, 150	C40x100x40, SV C40x100x40, SL with plastic cover profile	50, SV	min. 450	50

SL = section length as a multiple of the roller pitch (t)

SV = zinc-plated steel
 SL = enamelled steel

* Benchmarks. Mandatory values on request.

Example order: 55510 - 400 - 75 - 2000 - 600

- 55510 = Series no.
- 400 = Nominal width NB [mm]
- 75 = Roller pitch t [mm]
- 2000 = Drive length (L) (has to be a multiple of t) [mm]
- 600 = Section length (SL) (has to be a multiple of t) [mm]