

Gura Centring Station



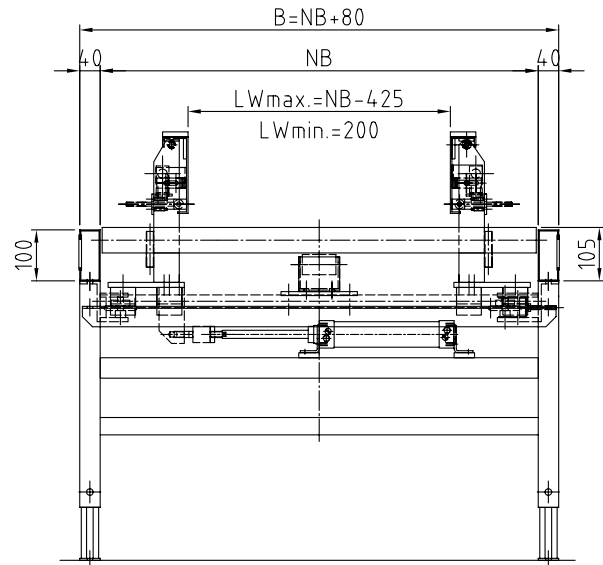
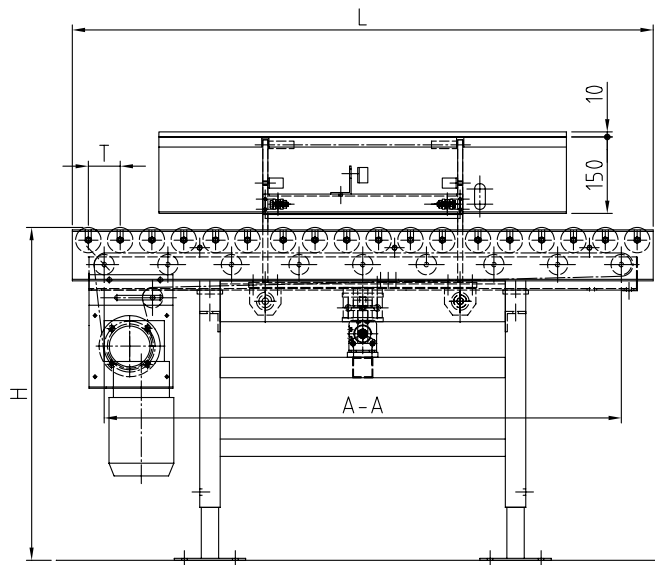
The GURA Centring Station with bottom belt drive is designed to convey different packages, boxes and other goods that need to arrive centred at a subsequent wrapping machine. The centring is pneumatically driven with an air pressure of 6 bars. The centring function is electrically controlled, and can be deactivated by a mutual actuation of the swinging centring guides.

This conveyor is designed for a safe transport of goods up to a max. load of 60 daN/m in a simple and economical way. The low-noise, zinc-plated steel rollers are run on bearings with antitwist protection; the axles have antistatic ends made of plastic. The rollers are driven by a low-wear belt by means of pressure from the bottom. The belt can only be mounted in the middle of the roller conveyor. Normally, goods can only be stopped by operation at set intervals or by stopping the drive. The drive length is max. 3 m per drive with a belt width of 50 mm. The speed (v) is from 0.1 to 0.8 m/s.

With a roller pitch of 100 mm the reference value for the carrying capacity is approximately 60 daN/m. The bottom belt drive enables a defined conveying which includes a better slaving and alignment of the goods. For troublefree operation you only need an oil and grease-free environment. As an option we offer enamelled steel profiles. The steel profile is sealed with a black plastic cover (PP) over the whole length. It can be used as a cable channel or a compressed-air piping channel. In the workplace area the danger resulting from the centring has to be considered. A safety fence to prevent intervention has to be planned. To upgrade your system a large-scale of ancillary equipment is provided, as well as controls.

GURA Centring Station

- Bed widths: 300, 400, 500, 600, 700 mm
- Roller pitches: 55, 75, 100, 150 mm
- Steel rollers: Ø 50 mm, zinc-plated
- Drive: 3x230/400 volts, gear motor with brake, max. v = ca. 0.1 - 0.8 m/s
- Length: up to approx. 3 m with a strain of 60 daN/m per drive unit
- Customized lengths and widths on request
- Frame: zinc-plated steel (SV), optional we offer enamelled steel profiles (SL)
- Zinc-plated H-type supports and mountings
- Deactivation by swinging centring guides
- Our complete system program includes straight lines, curves, merges and further components
- Ancillary equipment: guide rail, height and width adjustable, H-type supports, end stops



Centering Station

| Series | NB [mm] | L [mm] | t [mm] | Profile [mm] | Rollers D [mm] | v [m/s] | Capacity* [kg/m] |
|--------|----------------------------------|--|----------------|---|----------------|------------|------------------|
| 55800 | 300, 400 450, 500 600, 700 | length of segment max. 3,000 mm as a multiple of the roller pitch (t) | 75 100, 150 | C40x100x40, SV C40x100x40, SL with plastic cover profile | Ø 50x1.5, SV | 0.1 - .0.8 | 1 - 60 |

LW: min. 95 mm, max. NB -350 mm

SV = zinc-plated steel
 SL = enamelled steel

* Benchmarks. Mandatory values on request.

Example order: 55800 – 100 – 400 – 3000 = Centring Station

- 55600 = Series no.
- 100 = Roller pitch t [mm]
- 400 = Nominal width NB [mm]
- 3000 = Length L [mm]

Ancillary Equipment:

| Series | NB [mm] | Description |
|--------|-----------|--|
| F5042 | 300 - 700 | support, adjustment range H= +- -50 mm |
| F3002 | 300 - 700 | support with swivel joint, adjustment range H= +- -50 mm |
| 59930 | | guide rail, at both sides, SV-tube |
| 59910 | | light barrier and reflector holder |