



Powered Turntable

The GURA Powered Turntable is an alternative to a powered roller curve. It has a very low deflection radius and the speed is approximately twice as high as the speed of the infeed and outfeed conveyors.

This turntable is mainly used for the in-house transport with picking, sorting and distribution systems. It is also used for the transport of workpiece carriers and to connect machine and assembly stations. The turntable is designed to safely rotate boxes and plastic containers up to a maximum load of 30 daN/m in a 180 degree turn in a simple and space-saving way.

The powered rollers mounted at the infeed and outfeed position guarantee a safe transport of the goods and are powered by a round belt from roller to roller.

The turntable is plastic-coated and lies on top of four rubber wheels. The drive motor is mounted exactly in the centre and the turntable is directly powered by the drive motor. A guide rail made of a U-shaped profile is mounted at the outside of the turntable.

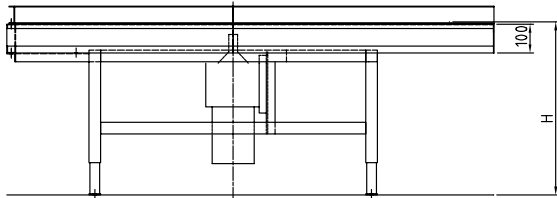
Series 58210 has a belt conveyor sticking out in the centre of the turntable to align and carry out the goods.



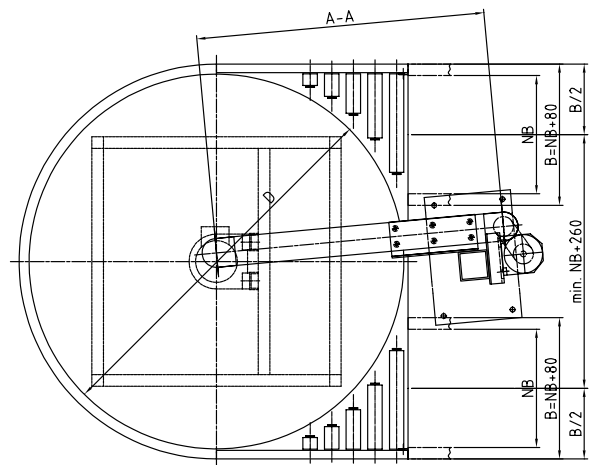
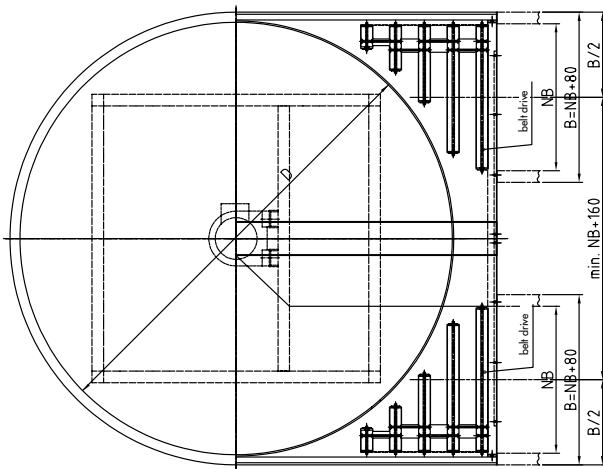
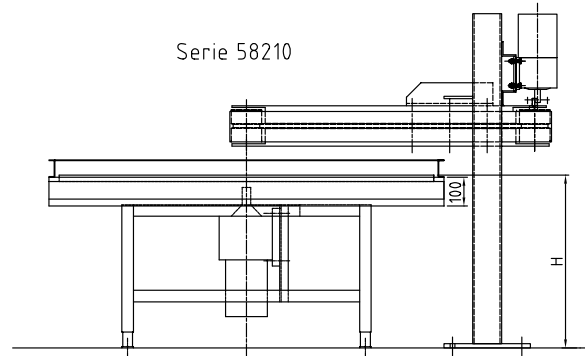
GURA Turntable

- Bed widths: 300, 400, 450, 500, 600, 700 mm
- Steel rollers: Ø 50 mm, zinc-plated
- Plastic-coated turntable
- Drive: 3x230/400 volts, gear motor
- Max. capacity: 30 daN
- Frame: C-shaped profile, enamelled version (SL)
- Guide profile: zinc-plated (SV)
- Supports: enamelled (SL)
- Our complete system program includes straight lines, curves, merges and further components

Serie 58200



Serie 58210



Powered Turntable

Series	NB [mm]	D [mm]	Profile	H1 [mm]	Capacity* [daN/m]
58200	300, 400	2 x NB + 160	C- shaped profile frame	with deflector	max. 30
58210	450, 500			with belt deflector	
	600, 700			enamelled	

* Benchmarks. Mandatory values on request.

Order example: 58220 - 1000 - 400 = Turntable

58220 = Series no.

400 = Nominal width (NB) [mm]