

Roller Conveyor Sections for Pallets

This pallet roller conveyor can be flexibly integrated in in-house pallet conveyor lines.

The roller conveyor section has a three phase traction motor as fixed drive which can be mounted either at one side or at the bottom of the conveyor.

The durable and sealed chain drive is almost maintenance-free. The required transport speeds are eligible. Reverse operation is a standard.

By combination of this conveyor section, also delivered in pairs, an accumulative and pressure-free conveying system can be assembled.

Without problems it is possible to accumulate and to buffer various successive pallets eg. between working areas with different phases or for preparation to dispatch.

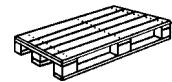
With PLC or bus systems the control can be modified according to the corresponding requirements.

Additional system components like eg. turntables, lift table conveyors are available too.

Ancillary Equipment:

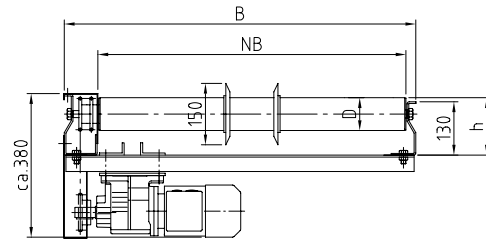
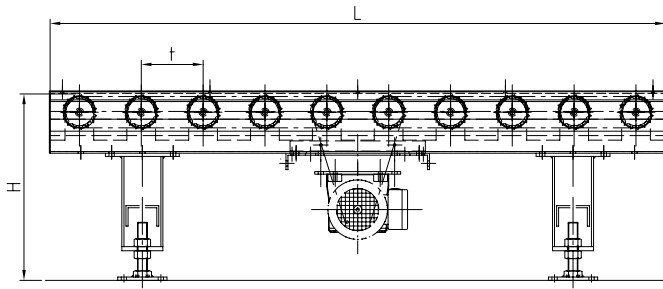


Buffer, Series 64900

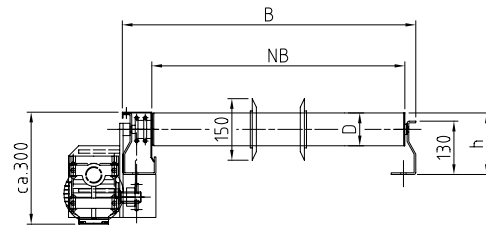
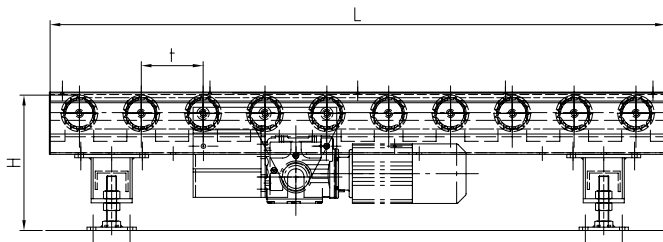


GURA Pallet Roller Conveyor

- Bed widths (NB): 900, 1100 mm
- Lengths: as a multiple of the modular dimension as required
- Roller pitches: 150.8 mm, 198.5 mm
- Framework: sigma profile 130x60 mm, 150x60mm, Sendzimir zinc-plated (SV), enamelled (SL) on request
- Durable H-type supports with adjustable feet (M24), enamelled
- Standard conveyor height: 500 ±30 mm, special heights on request
- Conveying speed $v = 0.2$ m/s
- Gear motor: 230/400 V, 50Hz, design corresponding to drive length



B: NB + 115 mm



Pallet Roller Conveyor with Motor Placed Underneath

Series	NB [mm]	t [mm]	L [mm]	Rollers D [mm]	H [mm]	h [mm]	v [m/s]	Capacity* [daN/m]
64230				80 x 2 SV		140.0		1000
64240	900 /	150.8 /	1357 / 1508	80 x 3 SV	min. 400	140.0	0.2	1500
64250	1100	198.5	1390 / 1588	89 x 3 SV		144.5		2000

Pallet Roller Conveyor with Motor Placed Collateral

Series	NB [mm]	t [mm]	L [mm]	Rollers D [mm]	H [mm]	h [mm]	v [m/s]	Capacity* [daN/m]
64330				80 x 2 SV		140		1000
64340	900 /	150.8 /	1357 / 1508	80 x 3 SV	min. 300	140	0.2	1500
64350	1100	198.5	1390 / 1588	89 x 3 SV		144.5		2000

* Benchmarks, depending on distance between supports.
 Mandatory values on request.
 SB = bright steel
 SV = zinc-plated steel

Example order: : 64230 – 150.8 – 900 – 1508 = Roller Conveyor Section with Steel Rollers 80 x 2 mm, Zinc-Plated Steel (SV)

- 64230 = Series no.
- 150.8 = Nominal width (NB) [mm]
- 900 = Roller pitch (t) [mm]
- 1508 = Conveyor length (L) (has to be a multiple of t) [mm]

Ancillary Equipment:

Series	NB [mm]	H [mm]	Description
F6005			adjustable foot, +- 50 mm
F6006	900, 1100	300/500	adjustable foot, +- 30 mm
64900			buffer, running meter
64910			charging device, heavy version
64930			charging device, light version, mounted at roller conveyor
64940			light barrier and reflector holder
95990			Flange, set, screwed D = 80 [mm]
64920	900, 1100		switching roller with limit switch