

Gura Pallet Elevator

The GURA Pallet Elevator is designed to convey goods up to a maximum load of 2000 daN in a simple and economical way. Possible goods are Euro pallets, special pallets and wire mesh boxes. Elevators have excellent performance in industry and wholesale trade. They are exclusively made for the transportation of goods and are part of a conveying system. Goods are separated and handed over to the GURA elevator by preliminary conveyor systems.

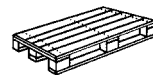
The elevating speed of the lifting carriage is subject to changes and is normally from 0.1 to 0.8 m/s. Dispatching and feeding of goods can be carried out in both directions and with as many levels as required.

The elevator can be equipped with either the roller conveyor of series 64000, the chain conveyor of series 67000 or the turntable of series 61000. The base plate is dowelled to the concrete floor. In case of a multi-level construction the lift pole of the elevator has to be mounted at the

floor opening of every level. Stand-alone elevators have to be equipped with a special base plate according to their requirements.

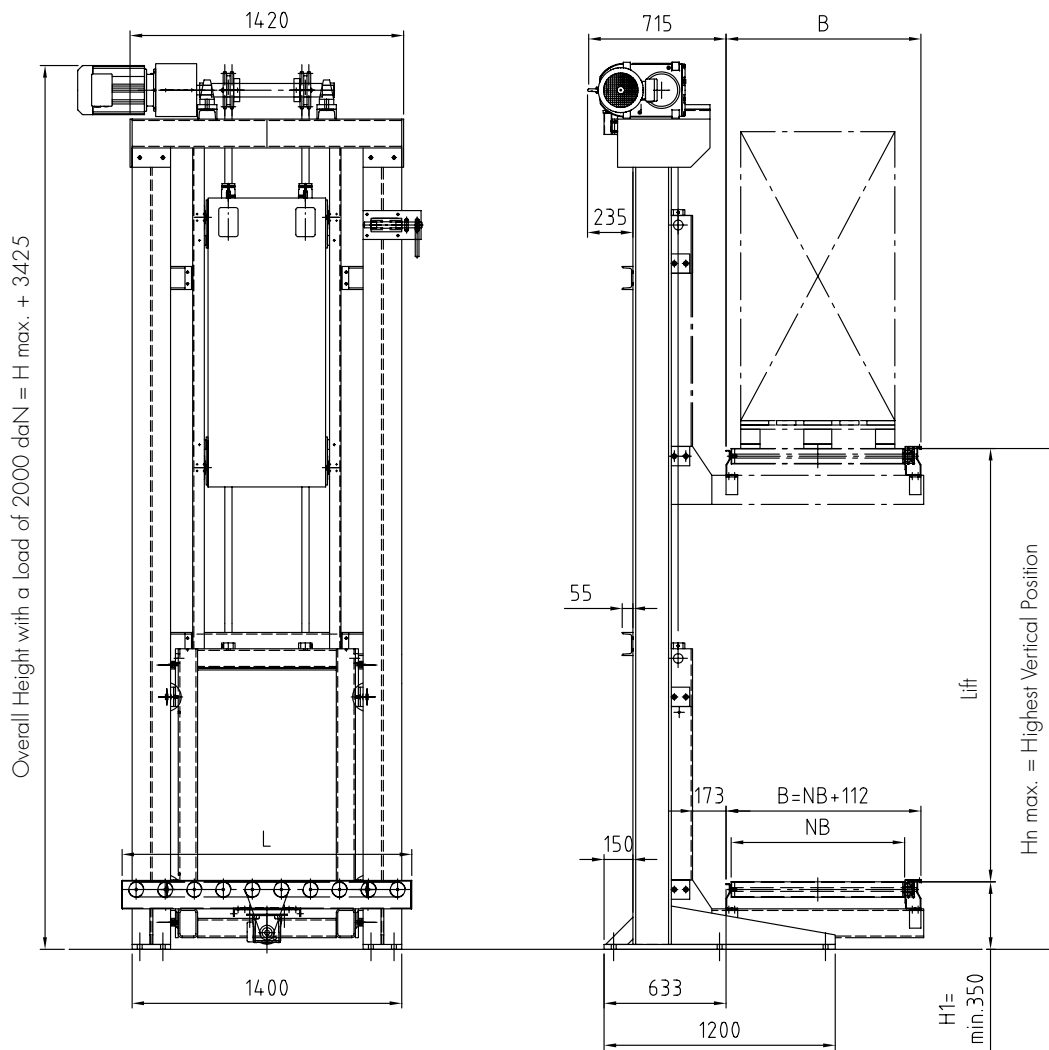
The lift carriage is moved by means of a gear motor with the aid of a counter weight. The guidance of the lift carriage is carried out between two HEB 200 girders. Even at a higher speed of the lifting carriage a smooth running is guaranteed by using Vulcolan wheels. The power supply of the movable elements, eg. lifting carriage, added module of the lifting carriage (roller conveyor of series 64000 or chain conveyor of series 67000) is provided by a plastic energy chain unrolling over the lift pole.

Additional system components are available too.



GURA Elevator

- 2-column style
- Bottom level usable as flow level starting with a conveying height of 350 mm
- Several levels possible, including contradiirectional to infeed direction
- Elevating speed $v = 0.1 - 0.8$ m/s
- Max. load 2000 daN / pallet
- Possible added modules: roller conveyor of series 64000, chain conveyor of series 67000 and turntable of series 61000
- Lift drive via Duplex chain



GURA Elevator with Roller Conveyor

Series	NB [mm]	L [mm]	v [m/s]	H1 [mm]	Hn [mm]	Capacity [daN/Pallet]
66100	900 / 1100	1508 / 1588	0.1 - 0.8	min. 350	highest vertical position	max. 2000

* Benchmarks. Mandatory values on request.

Example order: 66100 – 900 – 1508 – 3000 – 350 = Elevator with Roller Conveyor

66100 = Series no.

900 = Nominal Width NB [mm]

1508 = Length of added module (L) [mm]

3000 = Highest vertical position (Hn) [mm]

350 = Lowest vertical position (H1) [mm]