

## Heavy loads easily moved



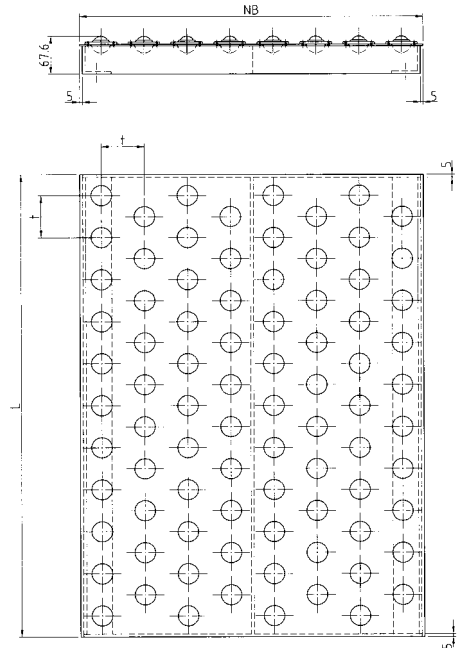
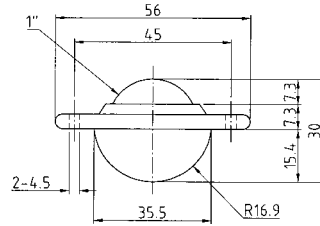
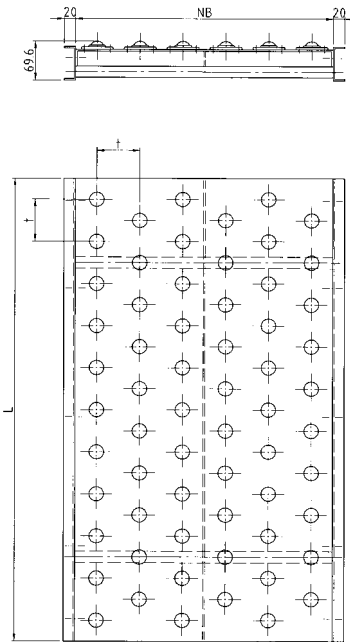
The GURA Ball Transfer Table is a flexible module for material handling. Heavy loads with an even and hard bottom can easily be moved by hand. The built-in 1" ball rollers are robust and durable. Bright steel ball rollers run in zinc-plated casings. The ball rollers are riveted to the table board. The GURA Ball Transfer Table is developed as a crossing with systems run by gravity or hand. Used as a worktable goods or workpiece carriers can be turned and moved easily and even the most different machining positions can be carried out. In shipping areas the goods can be moved flexibly to be captured and labelled. The same applies to its use as add-on unit to a scale.

GURA Ball Transfer Tables are best to handle sheets and steel plates in front of and behind processing machines. We will carry out the construction of your customized version rapid and reliable.



### GURA Ball Roller Table

- Distance between 2 ball rollers: 60, 75, 100, 125, 150, 200 mm
- Widths: 300, 400, 500, 600 mm
- Lengths: 500, 1000, 1500, 2000 mm
- Housing made of a durable profile steel construction (series 8112) or as a table built-in a GURA Roller Conveyor (8111)
- Table board: 3 mm sheet with reinforcing bars
- Ancillary equipment: ball roller Ø 1", can be delivered in individual pieces, supports, guide rails



**Ball Transfer Table**

Series	NB [mm]	L [mm]	t [mm]	Profile	Roller D	Capacity* [daN/m <sup>2</sup> ]
81110	300, 400,	500, 1000	60, 75, 100	U-shaped profile 20/60/20	1" (25,4mm)	100
81210	500, 600,	1500, 2000	125, 150, 200	U-shaped profile 25/100/25		200
81120				angle frame		300

**Example order:** 81120 – 75 – 400 – 1000 = Ball Roller Table with Angle Frame

- 81120 = Series no.
- 75 = Roller pitch t [mm]
- 400 = Nominal width NB [mm]
- 1000 = Length of table L [mm]

\* Benchmark .  
 Mandatory values on request.