

Heavy load capacity with low friction

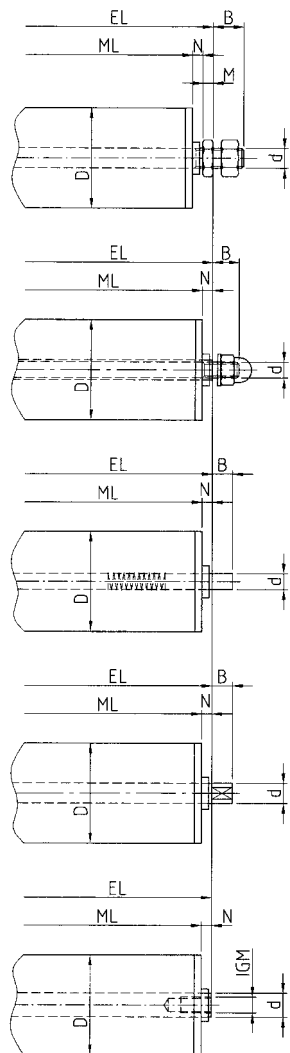


Among our components the series 91000 plays an important role. It has a simple construction and stands out because of its especially easy and quiet running. The smooth running is achieved by steel rollers of the ball bearing running in a bearing shell made out of special synthetic material. The combination of its single components and materials, the variety of the dimensions and the large spectrum of carrying capacity is acknowledged in many fields. The gravity roller of series 91000 is easy to clean, mounted with a few simple touches, low-noise running and maintenance-free.

GURA Light Conveyor Roller of Series 91000

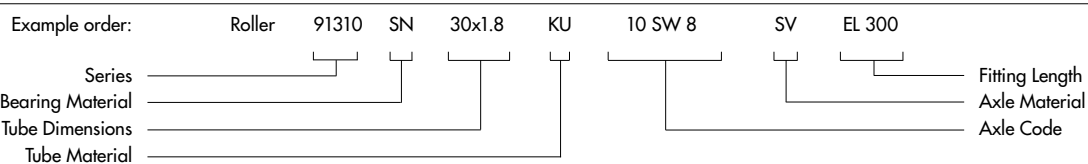
Bearings:	synthetic- ball bearing with steel balls	Ø 16 mm = 8 daN/roller* Ø 20 mm = 10 daN/roller* Ø 30 mm = 14 daN/roller* Ø 40 mm = 14 daN/roller* Ø 50 mm = 20 daN/roller*
Tubes:	plastic pipe, blue KU steel tube, bright (SB) steel tube, zinc-plated (SV) stainless steel tube (SN) aluminium tube (AL)	Ø 16, 20, 30, 40, und 50 mm Ø 20, 30, 40, und 50 mm Ø 20, 30, 40, und 50 mm Ø 20, 30, 40, und 50 mm Ø 20 und 50 mm
Customized versions:	steel tube with PVC coating steel tube, zinc-plated/bright with bead for round belt	Ø 20, 30, 40, und 50 mm Ø 50 mm
Axles:	bright, zinc-plated and stainless steel	
Axle ends:	external thread (AG) wrench flat (SW) internal thread (IG) spring loaded axle (FA)	Ø 6, 8, 10 und 12 mm Ø 10 und 12 mm Ø 12 mm Ø 6, 8, 10 und 12 mm

* The loadings listed above refer to the bearing assemblies per roller. Depending on the design the carrying capacities of the tube and axle may be lower than these values. If desired we can calculate the carrying capacity of your roller.



Axle Fixings	Axle Code	d [mm]	M [mm]	Axial Play [mm]	B [mm]
External Thread Axle	AG 6	6	3.2	3	10
	AG 8	8	4	3	11
	AG 10	10	5	3	15
	AG 12	12	6	3	18
Spacer Tube with External Thread Axle	DR 8 AG 6	6		3	11
	DR 10 AG 8	8		3	10
Spring Loaded Axle	FA 6	6		3	10
	FA 8	8		3	10
	FA 10	10		3	10
	FA 12	12		3	10
Wrench Flat Axle	10 SW 8	10		3	10
	12 SW 10	12		3	10
Internal Thread Axle	12 IG M 8x15	12		3	

Series	Bearing Material	Tube Dimension [DxW]	Tube Material	Possible Axle Diameter [d]	Axle Material	Hub Width N [mm]	Ball Bearing
91160		16x1.5	KU	6		2.5	single-row
91200		20x1.5	KU/AL/SB/SV/SN	6, 8		3.5	single-row
91300		30	SB/SV/SN	6, 8, 10		3.5	single-row
91310	SB = bright steel	30x1.8	KU	6, 8, 10	SB	3.5	single-row
91400	SN = stainless steel	40x1.5	SB/SV/SN	6, 8, 10	SV	3.5	single-row
91410		40x2.3	KU	6, 8, 10	SN	3.5	single-row
91500		50x1.5	SB/SV/SN/AL	6, 8, 10		5	double-row
91510		50x2.8	KU	6, 8, 10		5	double-row
91520		50x2.8	KU	12		5	single-row



Engineering changes excepted.